

The Marsh Memorial Sanctuary



Red/yellow trail marker

Trails beginning at:

Brookside Amphitheater -

Red / Blue - Goes to field parking area, moderate grade

Red / Yellow - Short, passes old, stone "kitchen", easy grade

Orange / Blue - Short, easy grades, passes by wetland

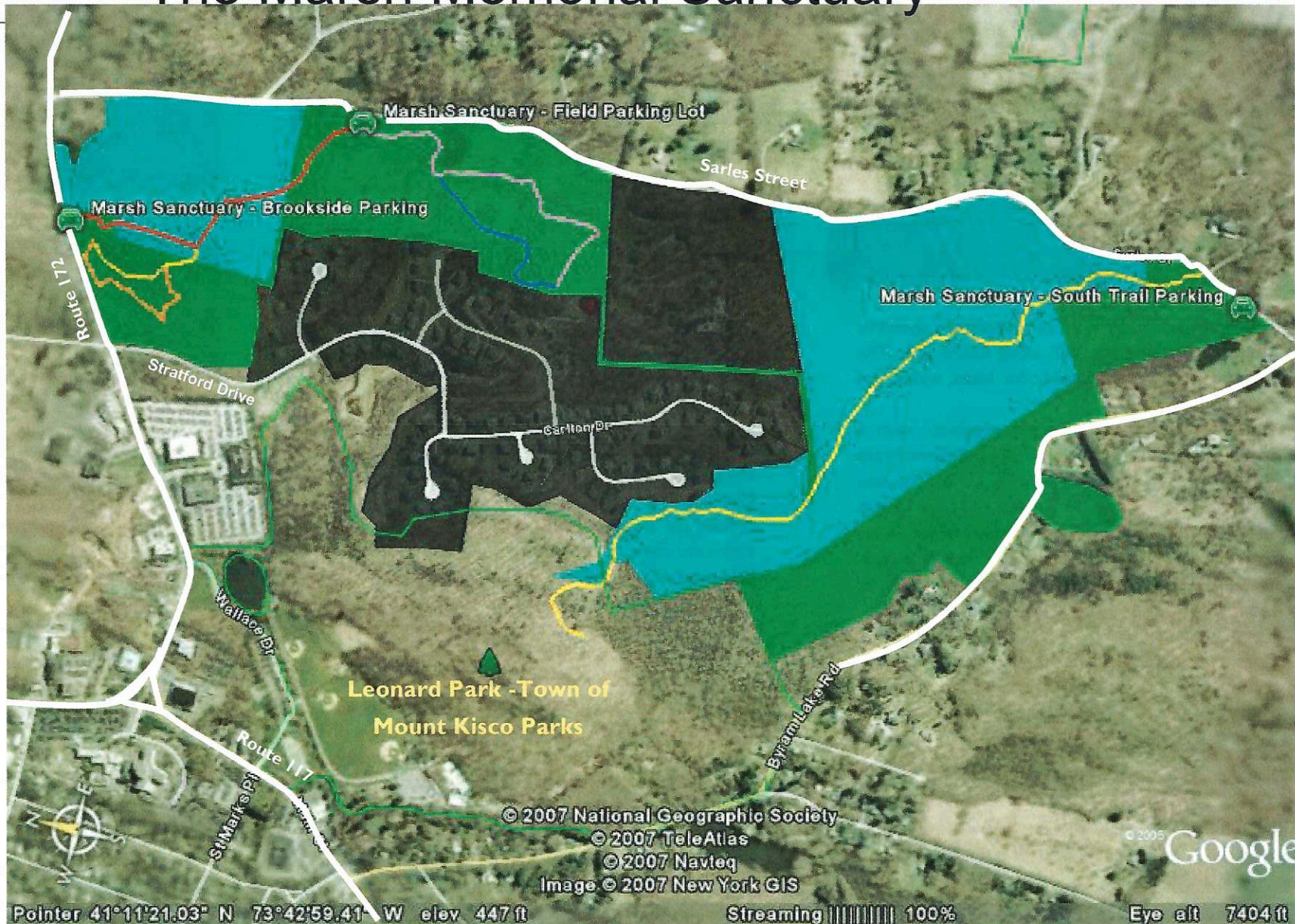
Field parking lot -

Pink / Green - Moderate grades, climbs to top of hill with a good view of southern Mount Kisco

Blue / Orange—Moderate grades, begins as a spur from pink trail near pond, reaches top of hill with view

South parking lot -

Yellow / Red— Longer, easy grades, extends to border of Leonard Park, approx. 1 mile



Sanctuary Property

Private Property -with permission for hiking and walking

Private property- No trespassing

Please feel free to contact us:

By e-mail -
marshsanctuary@yahoo.com
 By phone -
 (914) 241- 2808

Or by mail -
 Naturalist - Christian Pace
 114 South Bedford Road
 Mount Kisco, NY 10549